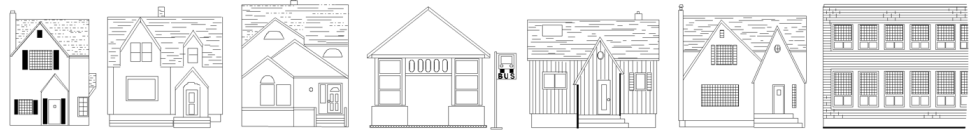


May  
2019



# THE McKernan Messenger

Since 1954 A publication of the McKernan Community League Circulation 1100

## Next league board meeting

Tuesday, June 7  
at 7:00 p.m. at the  
Community Centre  
(11341-78 Ave.)

Visitors welcome. To bring up a topic at the board meeting, please contact President Roberta Franchuk at least one week before the meeting.



**Infill season  
is underway  
– watch for  
construction  
damage**

### Infill construction must follow rules

An example of poor construction practices have turned up at another infill site in McKernan. Workers on the house at 10984-75 Ave. have been driving large equipment across the boulevard without the proper permits, according to city bylaws officers, and without protecting the valuable boulevard trees as required. There is now significant damage to both the boulevard grass and probably the trees, and enforcement action is being taken.

While it is incumbent on developers to meet all construction requirements, neighbours can fulfill a valuable role by watching out for and reporting behavior and practices that seem unsafe or illegal. Call 311 or use the 311 app to report construction behavior such as:

- damage to public property
- mud on streets or alleys
- unsafe worker practices
- blocking sidewalks or alleys without permits
- unsecured garbage on site
- portable toilet near neighbour's property or on city property

If you don't get a satisfactory response from 311, let the league know as well ([president@mckernancommunity.org](mailto:president@mckernancommunity.org)) so we can follow up.

To see what the responsibilities of infill developers are with regard to neighbours and community, see the City of Edmonton's Evolving Infill Good Neighbour Guide, available at [www.edmonton.ca](http://www.edmonton.ca)



## Pocket Park

University Ave and 112 St.  
Cleanup and Plant-in  
In May!

Watch the website or  
Facebook for details.

Come lend a hand!



**BIG BIN  
RESCHEDULED  
due to April snow!**

**NEW DATE: Saturday, June 22  
10 a.m. to 2 p.m.**

**McKernan Community Centre parking lot**

There is no charge to drop off items but  
you **MUST** be a community league member  
(memberships will be available to purchase.)

## McKernan Playgroup starts again this fall

Our playgroup for parents, caregivers and little ones (ages 0-5) will be starting up again in the fall. See the Messenger or the McKernan C.L. Facebook group for updates.

Can you help out? We're looking for another parent to share the (easy!) hosting duties. Contact Amanda at 780-243-5044 or [manda\\_243@hotmail.com](mailto:manda_243@hotmail.com)



## Summer Day Camp in McKernan: Nature Friends

Have fun being green this summer! Explore your community and the nature spaces that it has to offer. Go on nature walks, play nature games outside, and have a picnic in the park with your new friends. Each day you will create a new environmentally friendly craft, and to wrap up the week, you will enjoy a field trip! Ages 6-12

McKernan Community Centre (11341-78 Ave.)

July 15-19, 9am - 4 pm.

Cost \$188

Course code: 657282

Register at [MoveLearnPlay.edmonton.ca](http://MoveLearnPlay.edmonton.ca); call the City of Edmonton at 311; or register at any city Recreation Centre.

See [MoveLearnPlay.edmonton.ca](http://MoveLearnPlay.edmonton.ca) for a full range of summer daycamps and programs.



## Rent the community centre!

The community centre, located at 11341-78 Avenue, is open! Our beautiful facility includes smaller meeting spaces along with a refurbished hall complete with danceable wooden floor and air conditioning. For future bookings, contact hall rental coordinator Darlene Dudley at [hallrentalmckernancommunity@gmail.com](mailto:hallrentalmckernancommunity@gmail.com). More information about the hall and how to rent it is available at [www.mckernancommunity.org](http://www.mckernancommunity.org).

	Main hall	Meeting room	Boardroom
<b>Capacity</b>	151	60	16
<b>Hourly cost</b>			
<b>Weekend</b> (Friday evening, Saturday, Sunday)	\$75/hr	\$65/hr	\$25/hr
<b>Weekday</b> (day and evening)	\$55/hr	\$45/hr	\$25/hr
<b>Long-term rentals</b> (multi-week, with contract)	\$50/hr	\$40/hr	\$20/hr

\*GST will also be charged on rentals

Residents of McKernan who are members of the community league receive a 15% discount on one-time hall rentals.

Damage deposit and key deposit may also be required. Events where alcohol is served require event insurance through the renter.

## Community Contacts

PRESIDENT	Roberta Franchuk	780-431-4924 <a href="mailto:president@mckernancommunity.org">president@mckernancommunity.org</a>
VICE-PRESIDENT	Nathan Mol	780-722-0086 <a href="mailto:vicepresident@mckernancommunity.org">vicepresident@mckernancommunity.org</a>
SECRETARY	Agnieszka Matejko	780 438-1559 <a href="mailto:secretary@mckernancommunity.org">secretary@mckernancommunity.org</a>
TREASURER	Jennifer Branch-Mueller	
DIRECTORS	Marilyn Johnson	780-909-2480
	Phil Kloc	780-965-0773
	Rekha Shepherd	
	--vacant--	
TRANSPORTATION	--vacant--	
HOUSING ISSUES	Housing committee	<a href="mailto:housingdevelopments@mckernancommunity.org">housingdevelopments@mckernancommunity.org</a>
SCHOOL LIAISON	Michelle Jones	780-436-4134
SOCCER - Adult	Brad Odsen	<a href="mailto:bodsen@telusplanet.net">bodsen@telusplanet.net</a>
SOCCER - Youth	Carley Haynes	<a href="mailto:belmac@belgraviaedmonton.ca">belmac@belgraviaedmonton.ca</a> <a href="https://emsasouthwest.com/">https://emsasouthwest.com/</a>
CRICKET	C. Marathalingam	780-438-0460 <a href="http://www.ascacricicket.com">www.ascacricicket.com</a>
SKATING RINK	Greg Jones	780-222-2096
SOCIAL CONVENOR	--vacant--	
HISTORIAN	Ed Stover	780-436-4089
POCKET PARK	Michelle Jones	780-289-0635
SOUTH CAMPUS LIAISON	Wiggert Hessels	780-432-6379

## League Memberships

Memberships in your community league support programs, socials, hall activities, newsletters, and more; PLUS the League is looking out for your interests in housing, transportation, services and more. Memberships are \$35 for family or organizations, \$25 for single parent families. Single memberships with skating are \$20, seniors and students only \$10. A bargain! See the membership form at [www.mckernancommunity.org](http://www.mckernancommunity.org).

MEMBERSHIPS  
Joyce Chung  
[joyce.chung@gmail.com](mailto:joyce.chung@gmail.com)

## McKernan Messenger

The McKernan Messenger is published ten times per year. Advertising deadline: 1st of the month.

NEWSLETTER CONTENT  
Roberta Franchuk 780-431-4924  
[newsletter@mckernancommunity.org](mailto:newsletter@mckernancommunity.org)

DISTRIBUTION  
Cherie Hoyles

## [www.mckernancommunity.org](http://www.mckernancommunity.org)

WEBSITE MANAGER  
Nathan Mol  
[webmaster@mckernancommunity.org](mailto:webmaster@mckernancommunity.org)

## City of Edmonton

COMMUNITY SERVICES  
Kate Russell 780-496-5915  
[kate.russell@edmonton.ca](mailto:kate.russell@edmonton.ca)

CITY COUNCILLOR  
(Ward 8)  
Ben Henderson 780-496-8146  
[ben.henderson@edmonton.ca](mailto:ben.henderson@edmonton.ca)



# Development news

## Development committee forming

A small cadre of community members have met to revitalize the league's housing development committee. Residents Chelsey Peters, Vishal Sharma, Norma Nocente and Becky Luckert will be taking over from Peter Rausch to review development applications and variances and to monitor issues. They can be reached with questions or concerns at [housingdevelopments@mckernancommunity.org](mailto:housingdevelopments@mckernancommunity.org).

## Garage suite with front drive approved

A garage suite with a front access drive has been approved at 11242G-73 Ave. The property has an existing front driveway and City planners ruled that the proposed garage suite could continue to use that access, with tandem parking on the driveway.

## Development applications (Apr. 1 – May. 5)

This list covers permits that have been applied for in McKernan this month. Permits are under review unless otherwise noted. Complete information, including permit number and the name of the applicant, is available at the City of Edmonton mapping website [maps.edmonton.ca](http://maps.edmonton.ca) > Development Applications. Requested and approved applications for rezoning (not development) are listed at [https://www.edmonton.ca/residential\\_neighbourhoods/neighbourhoods/mckernan-planning-applications.aspx](https://www.edmonton.ca/residential_neighbourhoods/neighbourhoods/mckernan-planning-applications.aspx). If you have any questions about a project, contact [housingdevelopments@mckernancommunity.org](mailto:housingdevelopments@mckernancommunity.org).

10988–74 Ave.	To demolish a single detached house and detached garage.
10988–74 Ave.	To construct a semi-detached house with basement development (NOT to be used as an additional dwelling), fireplace and 1 secondary suite
11139–77 Ave.	To construct an addition (main floor, covered deck/patio/veranda, other: dormers) and to construct an accessory building (detached garage (7.32m x 7.32m)) and to construct interior alterations (renovating main floor and second storey, NOT to be used as an additional dwelling) and to construct exterior alterations (move/add windows, new siding) and to construct a rear uncovered deck.
11146–78 Ave.	To construct interior alterations to the main floor (converting unused space into storage). (Issued)

## Events in the community

**Plant Swap and Sale**, Sat. May 25, Edmonton Horticultural Society (10746-178 St.) is a great opportunity for members and other gardeners to find new homes for extra plants, exchange them for new ones, and buy locally hardy plants at reasonable prices. See [edmontonhort.com](http://edmontonhort.com) for event hours and details on how to bring in plants to swap.

**YEGardenSuites tour**, Sat. June 1, around Edmonton. Tour five different garden rental suites, inside and out, on the YEGardenSuites tour. Tickets at [www.YEGardenSuites.ca](http://www.YEGardenSuites.ca); see [www.yegardensuites.com](http://www.yegardensuites.com) for more info about suites.

**20th Annual Eco-Solar Home Tour**, June 1 and 2, around Edmonton and area, including Belgravia and Queen Alexandra. See 25 homes and buildings that showcase great environmental technologies and technique, including retrofit homes. A bike tour is also available. See [ecosolar.ca](http://ecosolar.ca) for locations and times.

**Social Justice Film Night**, Fri. June 14, 7 p.m., Westwood Unitarian Church (11135-65 Ave.). *Treasure Hunters* live on our waste, on what we leave behind. Get film listings at [www.westwoodunitarian.ca/participate/social-justice/social-justice-movie-nights/](http://www.westwoodunitarian.ca/participate/social-justice/social-justice-movie-nights/)



## Coding Classes for Children

Full-Week Summer Camps

Empower your child to be makers of technology  
McKernan Community Centre

Full-Week: Aug 6 - 9 Aug 12 - 16  
Aug 19 - 23 Aug 26 - 30

Code Discoverers (ages 5-7)  
Code Explorers (ages 8-12)  
Code Builders (ages 9-14)  
Python Discoverers (ages 10-14)  
Minecraft Camp (ages 7-14)

- ✓ Kids create their own programs with code
- ✓ Learn to problem-solve through building apps, logic-based games and puzzles
- ✓ Have fun making animations music, stories, games and more!

Register online at:

[www.discovercoding.ca](http://www.discovercoding.ca)



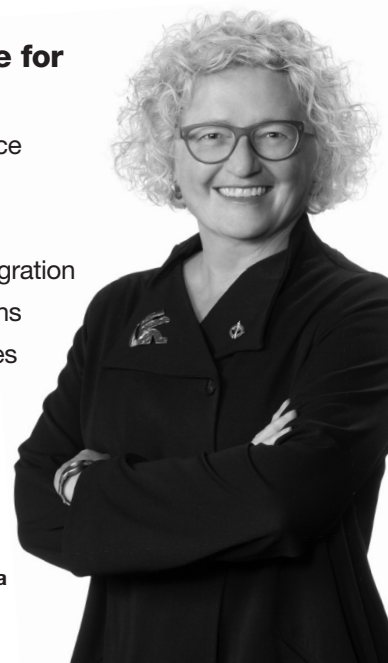
## Linda Duncan MP | Edmonton Strathcona

Contact my office for assistance with:

- Employment Insurance
- Income Tax
- Old Age Pensions
- Citizenship and Immigration
- Canada Student Loans
- Celebratory Messages

780-495-8404

10049 81 Avenue  
(entrance on 101 St)  
[linda.duncan.c1@parl.gc.ca](mailto:linda.duncan.c1@parl.gc.ca)



[www.LindaDuncanMP.ca](http://www.LindaDuncanMP.ca)

[f](https://www.facebook.com/LindaDuncanMP) [t](https://twitter.com/LindaDuncanMP) LindaDuncanMP



## Community briefs

### Summer daycare at the hall

Mckernan Child Care Society has spots available in their summer program (July and August only) for children in kindergarten to Grade 6. Lots of fun theme activities, and two fieldtrips each week! Email Jessica at [mccs@shaw.ca](mailto:mccs@shaw.ca), or call 780-437-1971. See [www.mckernanchildcare.com](http://www.mckernanchildcare.com)

### Reminder: No dogs on parkland

A reminder that dogs are not allowed on parkland — which includes the community league grounds and rink, all schoolgrounds and all parks (including McKernan Park and its spray deck). Dogs on leashes are allowed on trails, sidewalks and boulevards. This is set out under Edmonton's Parkland Bylaw C2202. Dogs are allowed off-leash on a variety of sites across Edmonton; a list of off-leash locations and maps is available at [edmonton.ca](http://edmonton.ca).

### Host families wanted

Open your home to international students this summer and enjoy a cross-cultural exchange that will provide lasting memories for your family. The English Language School at the University of Alberta welcomes groups of students from international universities during the summer. The groups will arrive at various times between June and September. The students will stay with a host family from one week up to a month.

Students are at least 18 years old, will attend class Monday to Friday and will be using public transportation to get to campus. Host families receive an honorarium. Contact Trudy Stevens, Homestay Coordinator, at [trudy.stevens@ualberta.ca](mailto:trudy.stevens@ualberta.ca) or 780-492-0071.

### Green and Gold Gardening

Looking for super-fresh, pesticide and artificial fertilizer-free vegetables and herbs, available at a garden close enough to bike to? The Green & Gold Community Garden on the U of A South Campus is gearing up for another season of providing produce. Proceeds from the volunteer-run garden go to support Tubahumurize, an organization to help victims of the genocide in Rwanda. The Garden is also looking for volunteers; both novice and experienced gardeners are welcome. See [www.greengoldgarden.com](http://www.greengoldgarden.com) to find out more, to volunteer, or to sign up for garden e-mails to learn what produce is available.



Dr Katherine Roche  
General Dentist



10240-124 Street Edmonton,  
Main floor Guardian Building  
780-488-8977  
[www.guardiandental.ca](http://www.guardiandental.ca)

Patient centered - Evidence based - Environmentally Responsible



### Clicbitz Summer Technology Camps for girls and boys ages 8-12

5 days of fun using 3D printers, computer programming skills, graphic design, and NFC technology. Create, customize and program your own Clicbitz buttons for your backpack!

Two sessions: July 8-12 and July 29-Aug 2

Monday- Friday 9 a.m. – 4 p.m.

\$300- Includes free backpack, and 20 clicbitz

Tracey Herriot | 514-430-6183 | [www.clicbitz.com](http://www.clicbitz.com)

## GUITAR LESSONS FOR KIDS



- Looking for Guitar lessons for your kids?
- Do not know what kind of Guitar will work best for them?

**Come and see us!**  
**We will help your kid grow**  
**the PASSION FOR MUSIC!**

**WE ARE OPEN ALL SUMMER!**

**ELECTRIC, ACOUSTIC AND BASS**  
Lessons held in easy reachable location  
**FREE PARKING**

**Call Today ➡ 780 637 0513**  
**AND BOOK A FREE INTRO SESSION**  
**FOR YOUR KID**

[www.EdmontonGuitar.com](http://www.EdmontonGuitar.com)



## League notes May

### Big bin postponed!

A late-April snowfall led to the postponement of our scheduled Big Bin event; the new date is Saturday, June 22 (see p.1). Unfortunately, a few folks still dropped off large pieces of furniture despite posted signs, which the league then had to pay to dispose of. Please be considerate of the community when participating in such events and follow the correct procedures and rules.

### New director joins, one vacancy remains

Rekha Shepherd has joined the Community League Board as a director. Rekha has lived in the community for two years and her children attend McKernan School. She will be taking on some social convenor responsibilities as well. Welcome Rekha!

The board is still short one director position. If you have always wanted to get more involved in the community, consider becoming a board member! Contact president Roberta Franchuk (president@mckernancommunity.org) for more info.

### League rink supports children's charity fundraiser

The league has received a gracious thank you letter from the organizers of the Medicine Cup Charity Tournament (medicinecup.ca), which ran on McKernan rink in February.

The committee raised \$24,750 for Little Warriors, their best fundraising year to date! Thanks for the rink crew for their efforts in a frigid February to keep the rink running to enable the fundraiser.

### Pub night organizer needed

The league is looking for someone to help us organize 2-3 pub nights in the fall and winter. Responsibilities are simple: purchasing liquor, license and snacks; supervising setup; selling liquor at the evening; submitting expenses. Helpers are available! A great way to socialize and meet people. Contact president Roberta Franchuk (president@mckernancommunity.org) for more info.



Our April Pub Night featured great live music with community band members. We are looking for someone to help with organizing our new series of pub nights starting in the fall.

## Median drivers causing damage

Impatient drivers are causing significant damage to the boulevard along University Ave. that separated the main road from the service road in the communities of McKernan and Belgravia. Deep ruts in the grass are visible in over a dozen spots from 114 St. to Saskatchewan Drive. Residents report seeing frustrated drivers honking, yelling and driving over the curbs, as well as blocking intersections at peak travel times. These have been reported to the city, and Transportation engineering will be reviewing mitigation options. Edmonton police have also been informed and may be monitoring the issue. One possible tactic might be for the city to install a more intimidating physical barrier along the median but this is being investigated

### Missing keys at the hall!

A number of keys have accumulated in the lost and found at the community hall. If you've lost a set in or near the hall, contact Darlene Dudley (hallrentalmckernancommunity@gmail.com) to identify and claim.

## Casino volunteers still needed

Thurs. July 18 and Fri. July 19  
Casino Edmonton (Argyll Road)

Day and evening shifts available. Fun and easy work.

Proceeds go to McKernan Community Centre project.

To volunteer: Hilary Gray at 780-434-0480 or hilarygray@shaw.ca



Our Naan, Masala Dosa and Malabar Porotta are best reviewed

We carry a nice blend of spices from North, Mid and South India (Kerala)

We use Halal certified meats only



# CORIANDER Cuisine

11214, 76 Avenue NW  
Edmonton, AB, T6G0K1  
Ph. 780. 430. 7667

Reservations / Caterings / Takeouts

corianderedmonton@gmail.com  
www.corianderedmonton.com

We do caterings for all your special occasions, family gatherings etc. at a very reasonable price





OUR HOUSE *Specials*

Sizzling Kebabs  
(Seek, Malai, Boti, Kakori)  
Naan, Porotta, Appam, Dosa  
Rogan Josh, Manchurians,  
Salliboti, Vindaloo, Saag  
Chilly Chicken / Beef, Tikka  
Tandoori Chicken, Chats  
Kulfi, Parfaits, Icecreams