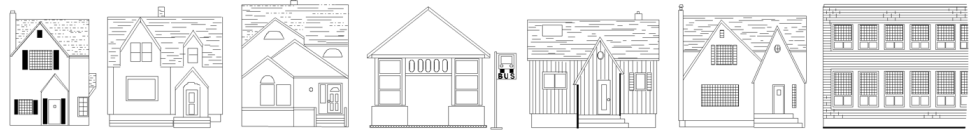


April
2021



THE McKernan Messenger

Since 1954 A publication of the McKernan Community League Circulation 1100

Next league board meeting

MONDAY, May 3

7:00 p.m. online

(check website for
connection details)

Visitors welcome. To bring up a topic at the board meeting, please contact President Phil Kloc at least one week before the meeting.

NEEDED: Membership coordinator

Responsible for managing spreadsheet of members, collecting membership fees, distributing cards and skate tags, and ordering supplies from the EFCL. Also may organize a fall membership drive, if possible. This is a low time commitment of approximately an hour or two per month. Contact Joyce at mckernanmembership@gmail.com

Street Sweeping May 2 to 8

City crews will be sweeping McKernan streets in the first week of May. Please move your vehicles off the street that week (or they may be towed!)

**Did you fill in your
Charles Simmonds Park
survey?**

**<https://www.surveymonkey.com/r/DHRWP3B>
(or see
mckernancommunity.org
for link)**

New executive elected at AGM

The McKernan Community League Board has a new executive, elected at the April Annual General Meeting. Former director Phil Kloc now serves as president, while Roberta Franchuk is now in the past president role. Phil has been on the board since 2017 in addition to being an active member of the rink team. He is a lifelong resident of McKernan as he and his wife built an infill house on the site of his childhood home in the community, and his kids attend McKernan School.

New vice-president Jerry Zhang has joined the board for the first time. Jerry is a new resident in McKernan but has lived in Edmonton for 14 years. He is a recent Pharmacy graduate from the U of A and has served on several student boards. In his free time, he enjoys playing basketball and researching travel destinations.

Treasurer Jen Bodnar has lived in McKernan for 20 years. She has past experiences with several organizations as a Treasurer/Bookkeeper and is excited to be part of our Community League's executive

Ingrid Poulin, elected as secretary, is a retired teacher who has been working on transportation issues for the league. She and her husband renovated and moved into a rental house they owned in McKernan four years ago.

Directors Marilyn Johnson and Rekha Shepherd return for further two-year terms, while Joyce Chung and Rolinda Graham's terms continue to next year.

All our new members are keen on contributing to the community and will bring great ideas and perspectives to the board.

The financial statements were also presented at the AGM. They show a significant dip in revenue due to COVID, but the league is still managing its resources. There has been no news yet on if casino grants will be available again or if and when we will be eligible for another casino event. Casino funding has been primarily used to pay for and maintain the league hall.

Also at the AGM, fees were set for the 2021-2022 league season. While fees had been waived for 2020-2021, we did not see a big increase in the number of members. It was thus agreed to set the upcoming year fees at slightly lower than what they were in 2020. New fees for 2021-22 will be \$25 for a family; \$20 for single-parent family; \$15 for an individual adult; and \$10 for student/senior.

MOVING? SPRING CLEANING?



Don't dump your garbage in the alley – bring it to our Big Bin Event

Sunday, May 2, 10 a.m. to 4 p.m. McKernan Community Centre parking lot

There is no charge to drop off items but you MUST be a community league member (memberships will be available)

VOLUNTEERS ALSO NEEDED - Contact Roberta Franchuk rafranchuk@hotmail.com

League notes April

Playgroup on hold

The McKernan Playgroup for caregivers and little ones under 5, had been meeting at McKernan Park until the fall. The group will start up again as soon as COVID restrictions allow, probably meeting on Tuesday or Thursday mornings. If you'd like more information or to help out, contact Mary at cox.marylouise@gmail.com

Some for-profit groups allowed in halls

The Edmonton Federation of Community Leagues and the City of Edmonton have negotiated a new process under which community leagues may rent space to for-profit groups that offer a recreation benefit. Before this point, only non-profit activities were allowed in the halls. Now leagues may decide to rent up to 30 per cent of their space to for-profit groups that provide "physical, social, cultural, intellectual, creative and spiritual pursuits that enhance individual and community wellbeing." McKernan has amended its tripartite agreement to include this provision, and looks forward to being able to offer a wider range of recreation opportunities to community members using this mechanism.

Garneau construction to start soon

Neighbourhood renewal in Garneau will be starting in spring of this year. This may have traffic and access impacts on McKernan residents. You can find out about the constructions plans for Garneau at https://www.edmonton.ca/transportation/on_your_streets/garneau.aspx, where you can also sign up for newsletters to keep on top of construction developments. A timeline will be available at that site later this month.

Revised summer park programs nearby

Green Shack programs will return to some neighbourhood parks this summer - but not to McKernan. After being cancelled for summer 2021, the popular program that brings a leader to parks to run games and activities with kids is back for 2020. However, there are no volunteer Leaders-in-Training, and Green Shacks will only appear at sites that were identified in 2019. Due to low attendance, McKernan will not have a program. However, Green Shack programs will run in communities nearby including Belgravia, Parkallen, Queen Alex and Garneau.

Community centre closed

Our community centre is currently closed to the public as per Alberta Health guidelines. We will reopen for events and rentals when it is safe to do so.

Please contact hallrentalmckernancommunity@gmail.com with questions.



Community Contacts

PRESIDENT	Phil Kloc	780-965-0773
	president@mckernancommunity.org	
VICE-PRESIDENT	Jerry Zhang	
SECRETARY	Ingrid Poulin	
	ingrid2323@gmail.com	
TREASURER	Jen Bodnar	
DIRECTORS	Marilyn Johnson	
	Rekha Shepherd	
	Joyce Chung	780-909-2744
	Rolinda Graham	
PAST PRESIDENT	Roberta Franchuk	780-431-4924
TRANSPORTATION	Ingrid and Tom Poulin	
	ingrid2323@gmail.com	
HOUSING ISSUES	Housing committee	
	housingdevelopments@mckernancommunity.org	
PLAYGROUP	Mary Cox	
	cox.marylouise@gmail.com	
SCHOOL LIAISON	Michelle Jones	780-436-4134
SOCCER - Adult	Brad Odsen	
	bodsen@telusplanet.net	
SOCCER - Youth	Carley Haynes	
	belmac@belgraviaedmonton.ca	
	https://emsasouthwest.com/	
CRICKET	C. Marathalingam	780-438-0460
	www.ascacricicket.com	
SKATING RINK	Greg Jones	780-222-2096
SOCIAL CONVENOR	Rekha Shepherd	
HISTORIAN	--vacant--	
POCKET PARK	Michelle Jones	780-289-0635
	4ourpocketpark@gmail.com	
SOUTH CAMPUS LIAISON	Wiggert Hessels	780-432-6379

League Memberships

Memberships in your community league support programs, socials, hall activities, newsletters, and more; PLUS the League is looking out for your interests in housing, transportation, services and more. Memberships are ZERO dollars for 2020/2021! See the membership form at www.mckernancommunity.org.

MEMBERSHIPS	Joyce Chung	780-909-2744
	mckernanmembership@gmail.com	

McKernan Messenger

The McKernan Messenger is published ten times per year. Advertising deadline: 1st of the month.

NEWSLETTER CONTENT	Roberta Franchuk	780-431-4924
	newsletter@mckernancommunity.org	
DISTRIBUTION	Cherie Hoyles	

www.mckernancommunity.org

WEBSITE MANAGER	Roberta Franchuk	780-431-4924
	webmaster@mckernancommunity.org	

City of Edmonton

CITY COUNCILLOR	Ben Henderson	780-496-8146
(Ward 8)	ben.henderson@edmonton.ca	
COMMUNITY SERVICES	Kate Russell	780-496-5915
	kate.russell@edmonton.ca	

Development news

Development applications (Mar 1 to Apr. 12)

The list below covers permits that have been applied for in McKernan last month. Permits are under review unless otherwise noted. Complete information, including permit number and the name of the applicant, is available at the City of Edmonton mapping website maps.edmonton.ca > Development Applications. Requested and approved planning applications (i.e. for rezoning, not development) are listed at https://www.edmonton.ca/residential_neighbourhoods/mckernan-planning-applications.aspx. If you have any questions about a project, contact housingdevelopments@mckernancommunity.org.

10925-73 Ave.	To construct an accessory building (detached garage (6.10m x 6.10m)) and to demolish a detached garage.
11120-75 Ave.	To develop a secondary suite (new suite) and to construct a rear uncovered deck.
10923-77 Ave.	To develop a secondary suite.
11148-78 Ave.	To construct exterior alterations (driveway extension)
11511-78 Ave.	To operate a minor home based business (3 Weird Sisters).
11536-78 Ave.	To construct interior alterations to a single detached house (basement development, NOT to be used as an additional dwelling).
11329-79 Ave.	To construct a rear uncovered deck.
11331-79 Ave.	To construct a rear uncovered deck.

Community briefs



Belmac Soccer Coordinator still needed!

Our amazing soccer community needs one or two people to take the role of soccer coordinator. The bulk of the work for this volunteer position needs to be done between February and March each year for the outdoor season, plus wrap-up work in June/July. Full training by SWEMSA is available and a full 12-month handover will be available from the current coordinator to ensure a smooth transition! Email belmac@belgraviaedmonton.ca or contact Carley on 780-288-1584 for more information.

Options for your green thumb

Interest in gardening has boomed in COVID times. But maybe you don't have a gardening opportunity in your current living situation? Or maybe you're looking for a new challenge, or want to beautify the community? Partners in Parks is a City beautification program that helps Edmontonians enhance and preserve their local green space. Sign up for this and "adopt" a community space that you can maintain by removing litter, weeding shrub beds, planting non-invasive annuals or perennials or watering plant material. There are several areas around McKernan that could use a little love: teardrop medians on 73 Ave.; shrub beds on the LRT line; or McKernan, Gowan, Charles Simmonds or Braithwaite Parks. Visit edmonton.ca/partnersinpark for details.

The Pocket Park on 112 St. and University Ave. has a dedicated group of volunteers from McKernan and Garneau who have tended it carefully for more than 15 years. They'll be up and running as soon as the ground is ready to work; contact them at 4ourpocketpark@gmail.com if you'd like to join for cleanup, planting or watering.

A home for your furniture

Moving in the spring? Don't want to haul that old dresser away with you? Donate your gently used household furnishing and home electronics to Find. Find participates in the Housing First Support Program by providing furniture to individuals and families who are transitioning out of homelessness. Drop items off at 5120-122 Street or call 780-988-1717 for pickup. Visit findedmonton.com for a list of accepted items or to fill out a donation request form.

Make McKernan litter-free

Each year, citizens, community groups and businesses band together to make Edmonton sparkle with the Capital City Clean Up. Request your free litter pick up supplies at www.edmonton.ca/capitalcitycleanup. Please participate with your family or household only, until restrictions are lifted.



Heather McPherson

Member of Parliament
Edmonton Strathcona

Contact my office for assistance with:

- Employment Insurance
- Old Age Pensions
- Canada Revenue Agency
- Citizenship & Immigration
- Canada Student Loans
- Celebratory Messages

780-495-8404
10045 81 Ave T6E1W7

 **NDP**

heather.mcperson@parl.gc.ca
Follow on   



Visit my website at www.heathermcperson.ndp.ca



10240-124 Street Edmonton,
Main floor Guardian Building
780-488-8977
www.guardiandental.ca

Dr Katherine Roche
General Dentist



Patient centered - Evidence based - Environmentally Responsible

Black knot fungus attacking local trees

Black knot, a fungal disease of trees and shrubs, is spreading throughout ornamental and fruit trees across the Edmonton region. It affects many well-loved types of trees and shrubs, including:

- Mayday
- Flowering Plum
- Flowering Almond
- Amur Cherry
- Nanking Cherry
- Korean Cherry
- Choke Cherry
- Sour Cherry
- Sand Cherry
- Pin Cherry
- Prunus hybrids
- Japanese Plum

The disease causes visible greenish-brown to black swelling in the stems of trees. It is spread by spores that are released in warm, wet weather. If infected branches are not carefully and correctly pruned, the tree will eventually die.

Black knot is already visible in many places across Edmonton. The City has a program to prune and remove affected branches in city trees, but residents need to be alert to black knot on private trees.

Pruning is best done in late fall, winter or very early spring when plants are dormant and knots are easy to see. Large trees should be pruned by a trained arborist. To prune:

- Remove infected branches to at least 15-20 cm (6-8 inches) below knot (good pruning technique is to prune an infected branch further back to a healthy collar, rather than leave a stub)
- Clean and disinfect cutting blades with bleach after each cut.
- Bag diseased wood completely and set it out for garbage collection immediately.
- Do not prune in warm, wet weather.

See more at www.edmonton.ca/programs_services/pests/black-knot.aspx

Second University Ave. building approved by City Council

City Council unanimously approved the 114 University II development rezoning on the sites 11323 to 11335 University Avenue at a meeting April 7. The six-storey building site-specific development (DC2) zoning was supported by city planners as it does conform to the McKernan-Belgravia Area Redevelopment Plan (ARP), including for height and building massing.

Planners supported the additional density near the two LRT stations, and the reduced parking. The building is to share an underground parking garage with the McKernan Gates building on the corner, which is already under construction. This will reduce the amount of vehicle traffic through the community and especially down the alley.

Councillors had few concerns about the proposal, only confirming that the greenway that was identified in the ARP is still able to be constructed. Community concerns about the higher floor area ratio of this project were labelled by planners as not a significant enough change to warrant withdrawing support.

The project was not required to make a community amenity contribution.

Councillor Ben Henderson complimented the developers for significantly revising their original, taller proposal and for "colouring within the lines and following the ARP" to comply with the vision for the neighbourhood. This does confirm that the ARP is a solid plan against which to assess further development proposals that are presented to the community and to council.



LASH STUDIO & SPA 11206 76 AVE NW

- EYELASH EXTENSIONS & LASH LIFTS
- BROW LAMINATION & P.M.U BROWS
- MANICURE/PEDICURE
- GEL/ACRYLIC NAILS
- HAIR SERVICES

XOROUGE.GENBOOK.COM

WWW.XOROUGE.CA

**BRING THIS AD AND SAVE 15% ON
LASH SERVICES WITH ASHLEY !!!**

MUSIC LESSONS! ZOOM or IN PERSON DURING THE COVID-19



- Are you looking for a **new**, stress-free activity to keep you sane during these **hard times**?

- Have you always wanted to **connect** with **Music** but never had the chance before?

- Do you **need a break** from the daily grind with a **inspiring** diversion?

SIGN UP FOR PIANO or GUITAR LESSONS, ONLINE or IN PERSON

- You can choose between attending Online from your home, or coming to the Studio*!

- You will **Learn Music**, have **fun** and enjoy actual **accomplishments** despite the "new normal"!

- You will hang out with other folks who **Love Music** like you do!



www.EdmontonGuitar.com

*Subject to availability

**Or Call Today ➔ 780 637 0513
TO BOOK A FREE ASSESSMENT**